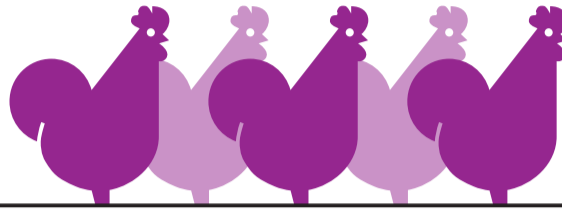


# GAIN MORE VALUE WITH OPTIMIZED WATER HYGIENE!\*

Full-service, automated drinking water hygiene by Evonik



- + Increased live weight
- + Improved uniformity
- Lower losses
- Less feed consumption



= Stabilized fattening process  
= Up to EUR 2,400 added value per fattening period

Check your potential now!  
**FREE TRIAL RUN** for one fattening period!

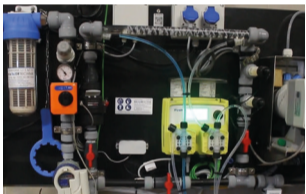
Contact  
Stephan Neumayer  
Business Development  
stephan.neumayer@evonik.com



Scan the QR code for more information

## Prevent biofilm formation through a combination of dosing technology and digital monitoring

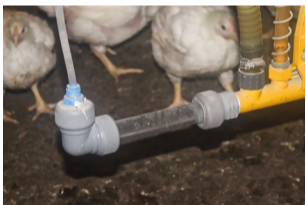
System solution components, all provided by Evonik



Dosing unit with filter, metering, pump and sensors injects oxidant and acid into drinker line



Gateway Siemens IoT2050 equipped with WiFi sends data to Siemens IoT cloud

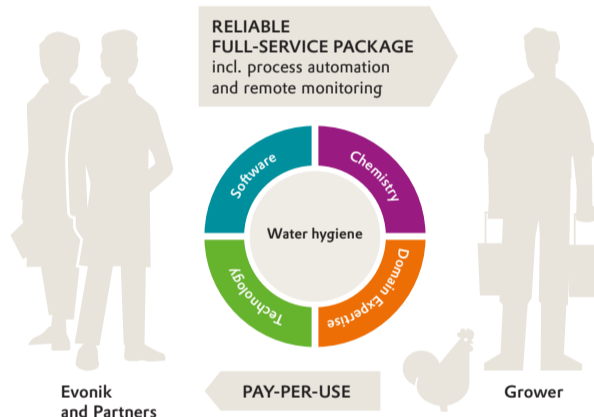


Biofilm formation is identified through visual inspection of a transparent tube

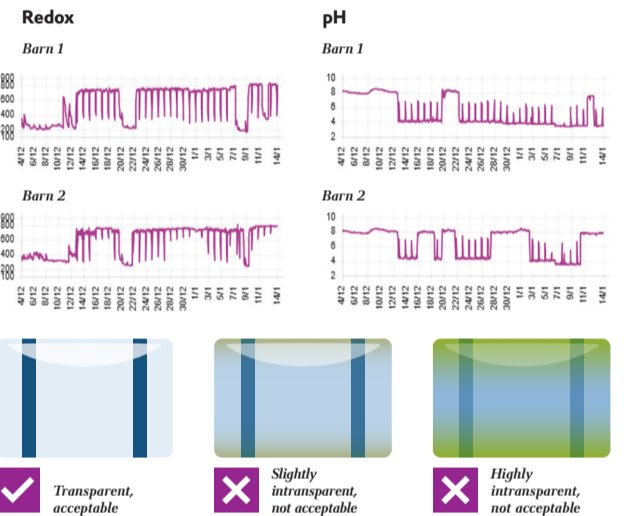


If necessary, turbidity and oxidant concentration are measured with a photospectrometer

Drinking water hygiene as a full-service offering



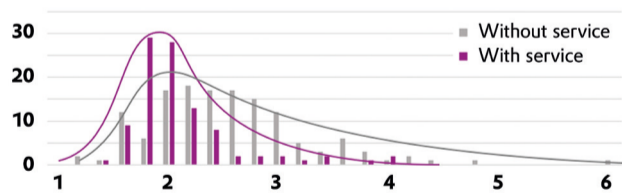
Redox/pH measurement and visual inspection ensures target value compliance



## Considerations for added value per fattening period through the use of Evonik's full-service package

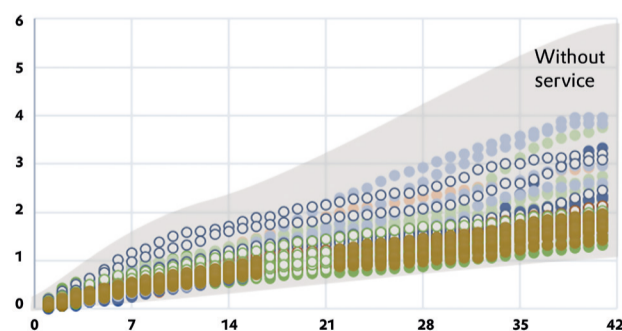
### Frequency distribution of losses

Count of observations versus cumulative losses value of flock in %



### Losses over time

Cumulative losses in % versus day of flock



### Data for 14 fattening periods without and 10 fattening periods with service

**Animal number and live weight**  
30,000 Birds per fattening period and barn  
• 10,000 birds pre-catch 2.0 kg/bird = 20,000 kg  
• 20,000 birds main-catch 2.5 kg/bird = 50,000 kg  
**In total 70,000 kg per fattening period**

**Lower losses**  
• Delta 0.36 % or 0.0036 x 70,000 kg = 252 kg  
x 1.1 EUR/kg = **277 EUR**

**Less Feed**  
• Delta 0.05 g feed per live weight x 70,000 kg  
x 3.5 t feed x 400 EUR/kg = **1,400 EUR**

**Increased live weight**  
• Delta 22 g per bird  
x 30,000 birds (in pre-/main-catch) x 660 kg  
x 1.1 EUR/kg = **726 EUR**

**Overall**  
• Added value per fattening period in total ~ **2,400 EUR**  
• Reduced value distribution and reduction in extreme losses

**Added value**  
(14 periods without service and 4 periods with service, 10 barns per period)

KPI	Unit	Analysis			Added value EUR per fattening period
		Without service	With service	Difference	
Losses	%	2.67 ± 0.65	2.31 ± 0.13	0.36	277
Feed conversion rate	g/g	1.57 ± 0.16	1.52 ± 0.02	0.05	1,400
Live weight per bird	g	2,610 ± 67	2,632 ± 34	22	726
<b>Total</b>					<b>2,403</b>

